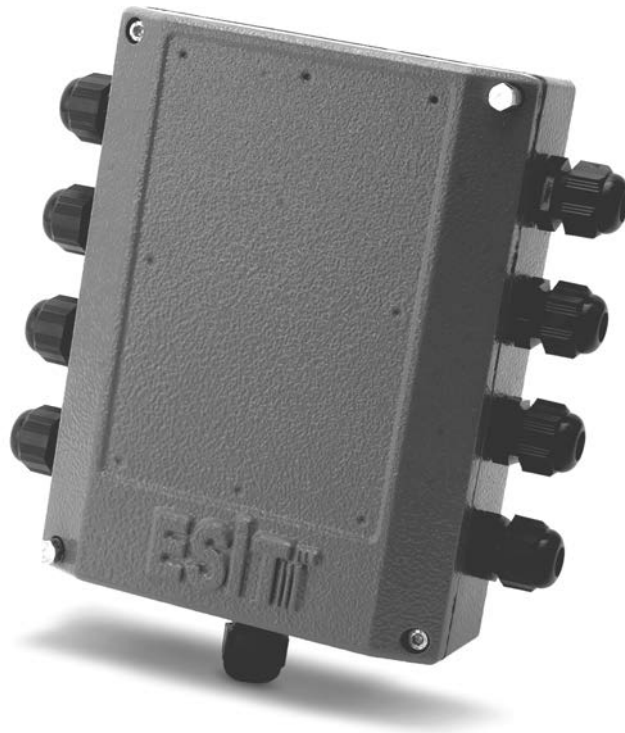


J-BOX

Load Cell Connection Box

ESIT^{III}

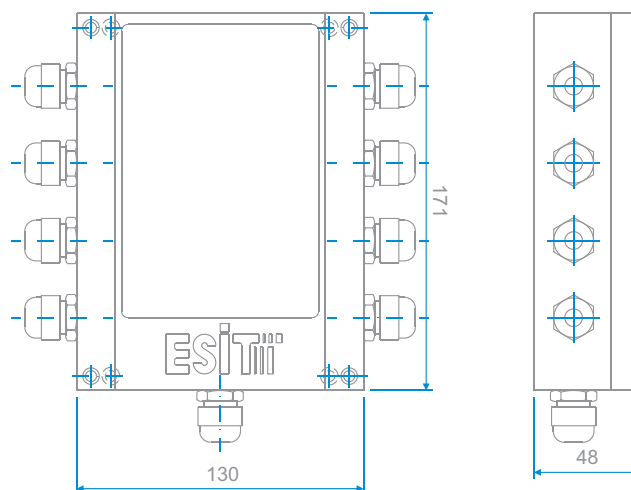


Product Description

Esit J-type connection boxes gather the electrical signals from the load cells and transmit them to the indicators. With the trim pots in the J-Box, the load cell signals can easily be equalized. With its stray aluminium case, it provides ultimate protection against possible impacts and climate conditions.

Dimensions

(All measurements are expressed in millimeters)



Esit reserves the right to modify, without prior notice, the products in accordance with technological developments.

ESIT^{III}